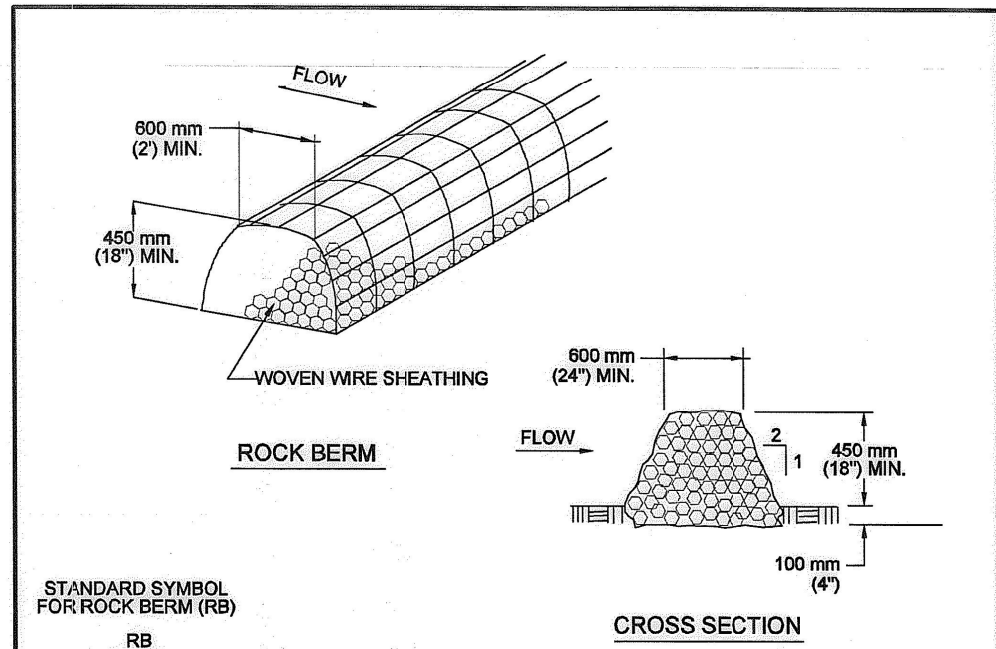
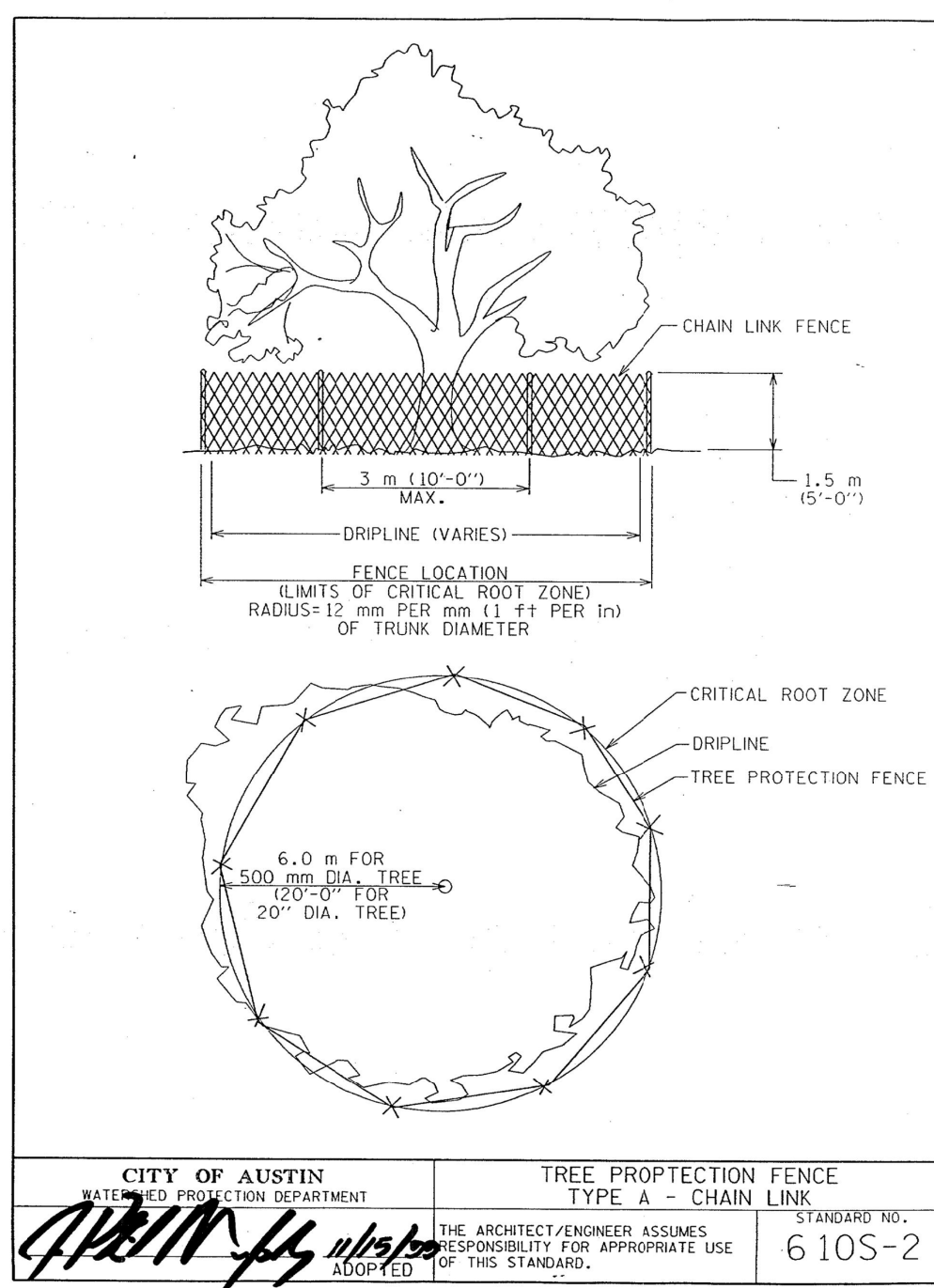


CITY OF AUSTIN  
WATERSHED PROTECTION DEPARTMENT  
STANDARD NO. 610S-1  
APPROVED: 11/16/20  
THE ARCHITECT/ENGINEER ASSUMES RESPONSIBILITY FOR APPROPRIATE USE OF THIS STANDARD.

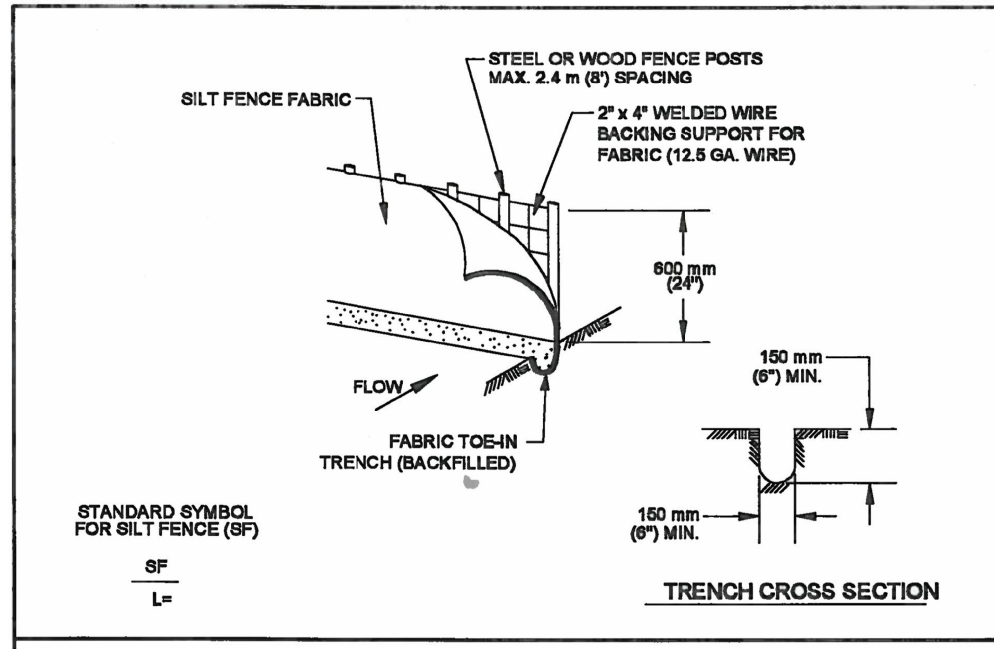


NOTES:  
1. USE ONLY OPEN GRADED ROCK 75 TO 125 mm (3 TO 5") DIAMETER FOR ALL CONDITIONS.  
2. THE ROCK BERM SHALL BE SECURED WITH A WOVEN WIRE SHEATHING HAVING MAXIMUM 25 mm (1") OPENING AND MINIMUM WIRE DIAMETERS OF 12.5 mm (20 GAUGE).  
3. THE ROCK BERM SHALL BE INSPECTED DAILY OR AFTER EACH RAIN, AND THE STONE AND/OR FABRIC CORE-WOVEN SHEATHING SHALL BE REPLACED WHEN THE STRUCTURE CEASES TO FUNCTION AS INTENDED, DUE TO SEDIMENT ACCUMULATION AMONG THE ROCKS, WASHOUT, CONSTRUCTION TRAFFIC DAMAGE, ETC.  
4. IF SEDIMENT REACHES A DEPTH EQUAL TO ONE-THIRD THE HEIGHT OF THE BERM OR 150 mm (6"), WHICHEVER IS LESS, THE SEDIMENT SHALL BE REMOVED AND DISPOSED OF ON AN APPROVED SITE AND IN A MANNER THAT WILL NOT CREATE A SEDIMENTATION PROBLEM.  
5. WHEN THE SITE IS COMPLETELY STABILIZED THE BERM AND ACCUMULATED SEDIMENT SHALL BE REMOVED AND DISPOSED OF IN AN APPROVED MANNER.

CITY OF AUSTIN  
WATERSHED PROTECTION DEPARTMENT  
STANDARD NO. 639S-1  
APPROVED: 8/24/2010  
THE ARCHITECT/ENGINEER ASSUMES RESPONSIBILITY FOR APPROPRIATE USE OF THIS STANDARD.



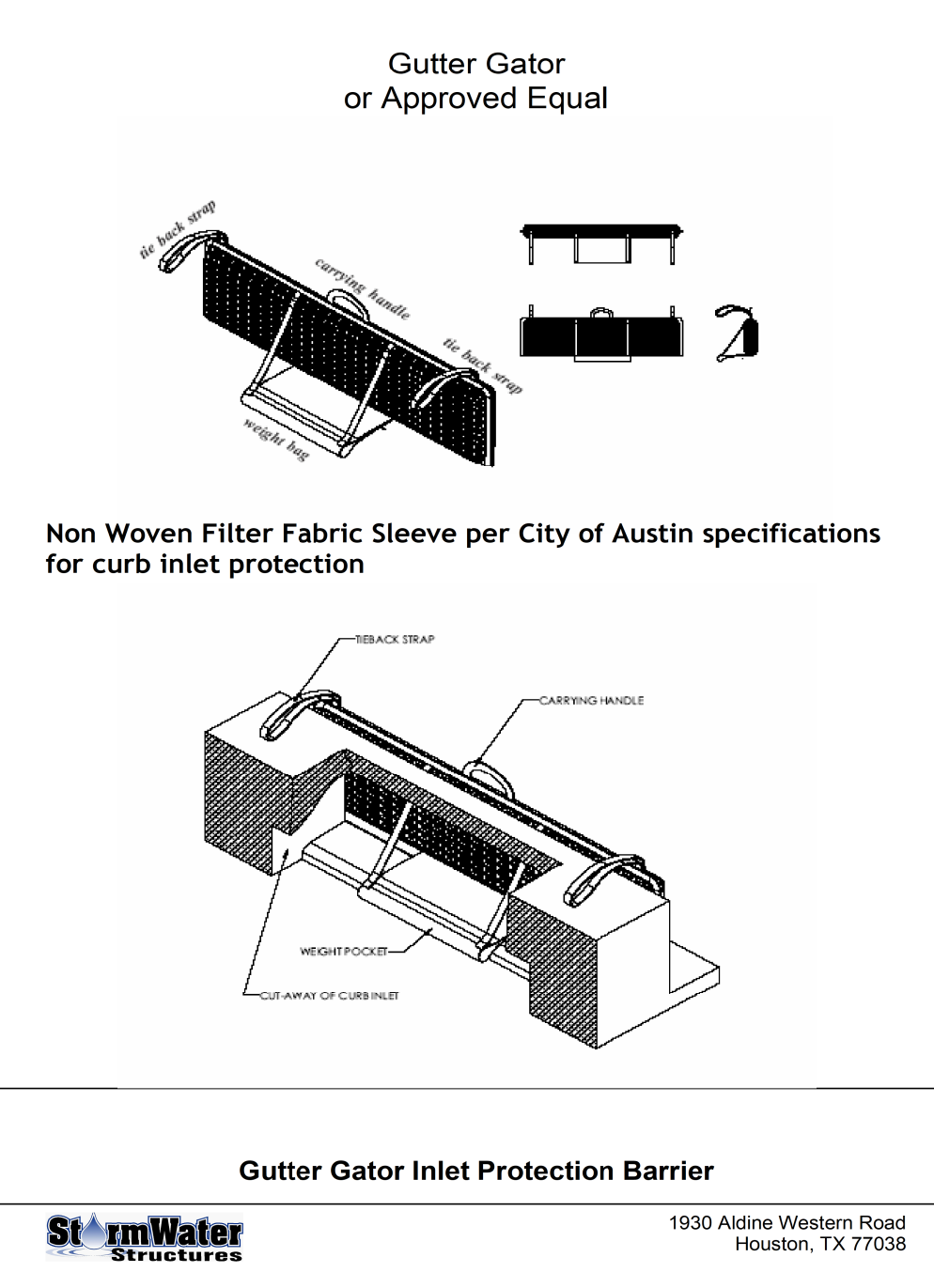
CITY OF AUSTIN  
WATERSHED PROTECTION DEPARTMENT  
STANDARD NO. 610S-2  
APPROVED: 11/16/20  
THE ARCHITECT/ENGINEER ASSUMES RESPONSIBILITY FOR APPROPRIATE USE OF THIS STANDARD.



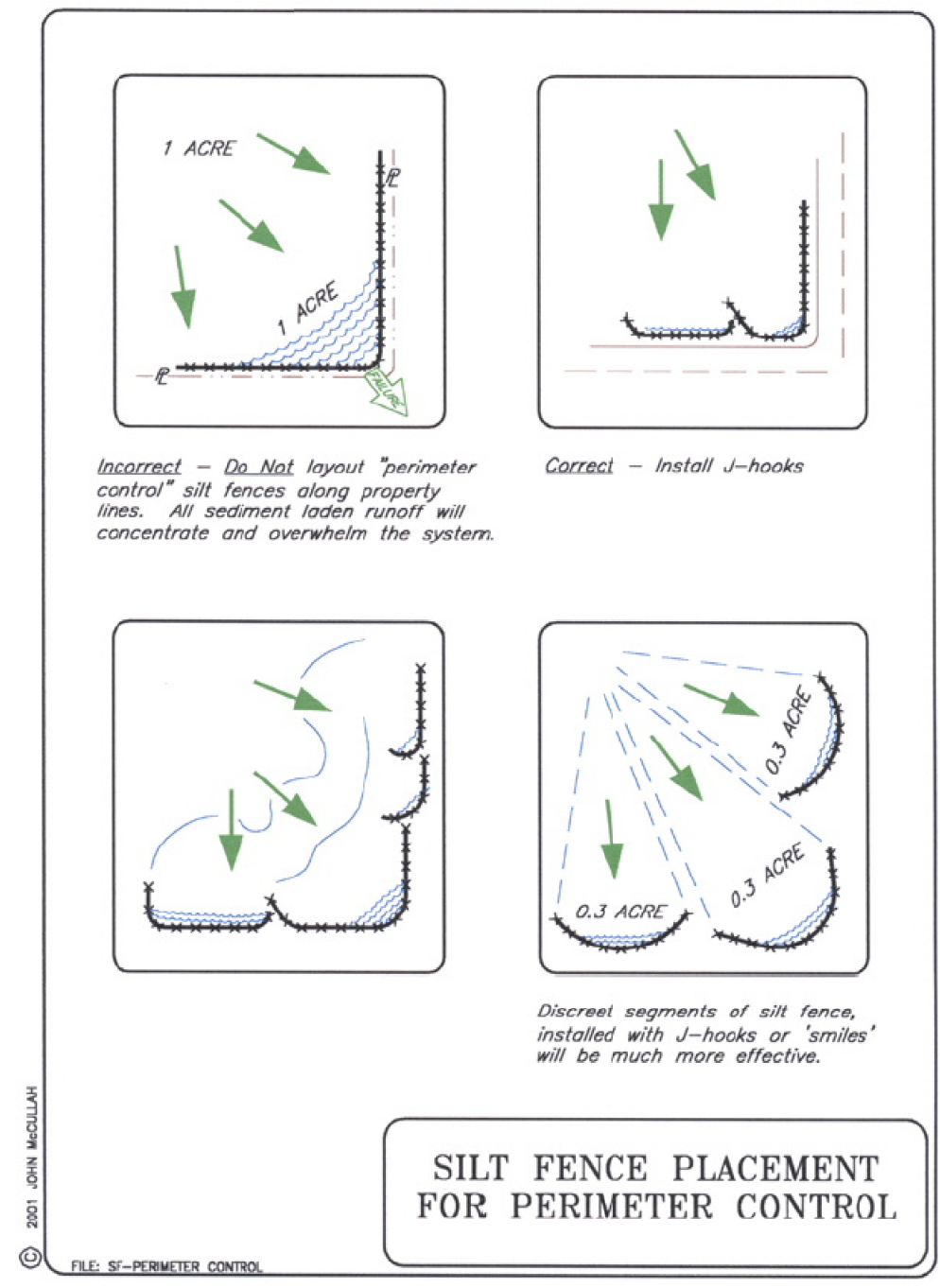
1. STEEL OR WOOD POSTS WHICH SUPPORT THE SILT FENCE SHALL BE INSTALLED ON A SLIGHT ANGLE TOWARD THE ANTICIPATED RUNOFF SOURCE. POST MUST BE EMBEDDED A MINIMUM OF 300 mm (12 INCHES). IF WOOD POSTS CANNOT ACHIEVE 300 mm (12 INCHES) DEPTH, USE STEEL POSTS.  
2. THE TOE OF THE SILT FENCE SHALL BE TRENCHED IN WITH A GRADE OR MECHANICAL TRENCHER, SO THAT THE DOWNSLOPE FACE OF THE TRENCH IS FLAT AND PERPENDICULAR TO THE LINE OF FLOW.  
3. THE TRENCH MUST BE A MINIMUM OF 150 mm (6 INCHES) DEEP AND 150 mm (6 INCHES) WIDE TO ALLOW FOR THE SILT FENCE FABRIC TO BE LAID IN THE GROUND AND BACKFILLED WITH COMPACTED MATERIAL.  
4. SILT FENCE FABRIC SHOULD BE SECURELY FASTENED TO EACH STEEL OR WOOD SUPPORT POST OR TO WOVEN WIRE, WHICH IS IN TURN ATTACHED TO THE STEEL OR WOOD FENCE POST.  
5. INSPECTION SHALL BE MADE WEEKLY OR AFTER EACH RAINFALL EVENT AND REPAIR OR REPLACEMENT SHALL BE MADE PROMPTLY AS NEEDED.  
6. SILT FENCE SHALL BE REMOVED WHEN THE SITE IS COMPLETELY STABILIZED SO AS NOT TO BLOCK OR IMPROVE STORM FLOW OR DRAINAGE.  
7. ACCUMULATED SILT SHALL BE REMOVED WHEN IT REACHES A DEPTH OF 150 mm (6 INCHES). THE SILT SHALL BE DISPOSED OF ON AN APPROVED SITE AND IN SUCH A MANNER THAT WILL NOT CONTRIBUTE TO ADDITIONAL SILTATION.

CITY OF AUSTIN  
WATERSHED PROTECTION DEPARTMENT  
STANDARD NO. 642S-1  
APPROVED: 9/1/2010  
THE ARCHITECT/ENGINEER ASSUMES RESPONSIBILITY FOR APPROPRIATE USE OF THIS STANDARD.

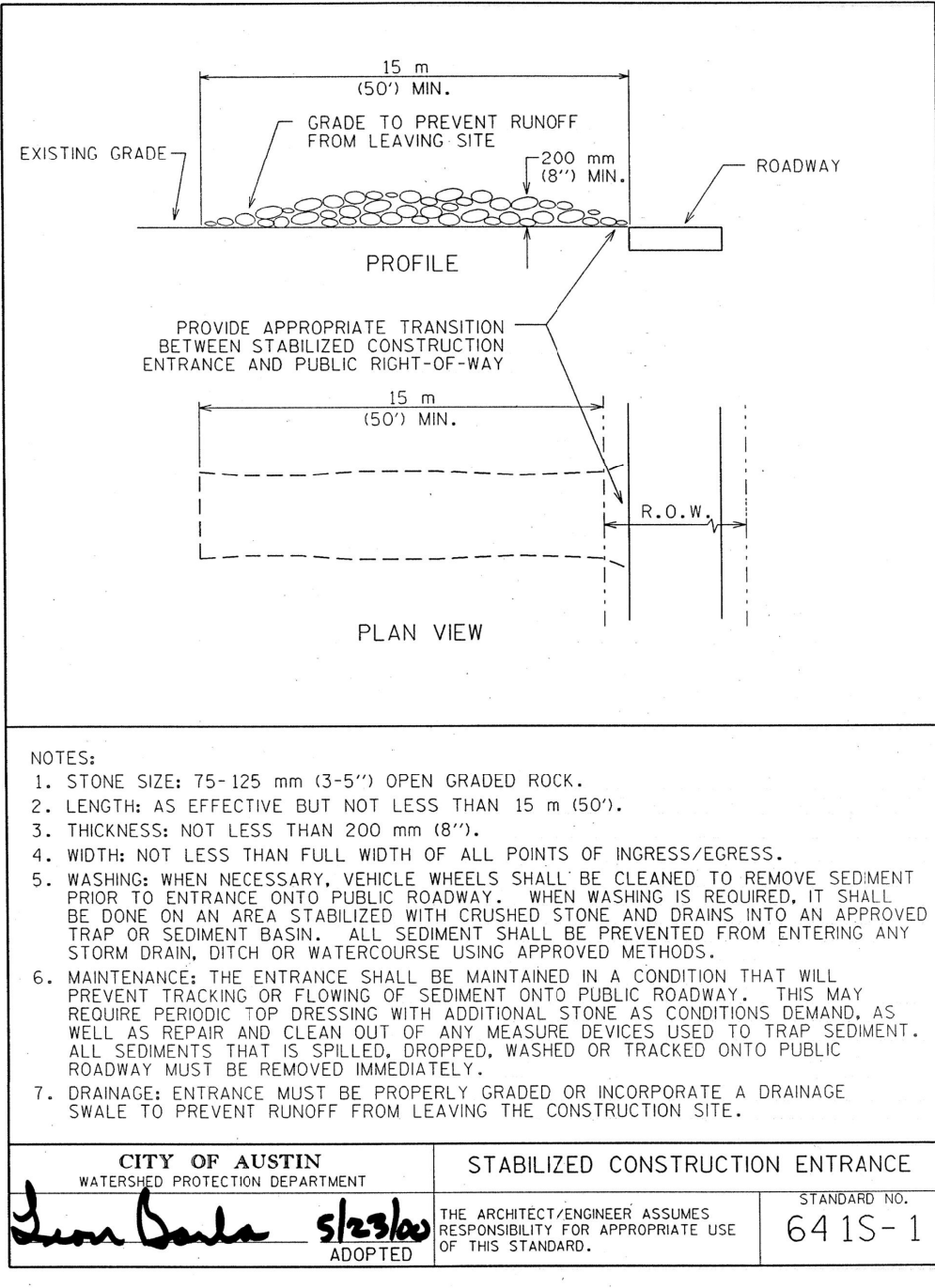
NOTE:  
SILT FENCE TO BE "NON-WOVEN" GEOTEXTILE FENCE.  
WITH A MINIMUM WEIGHT OF 4.5 OZ/SQFT PER COA SPEC 642S



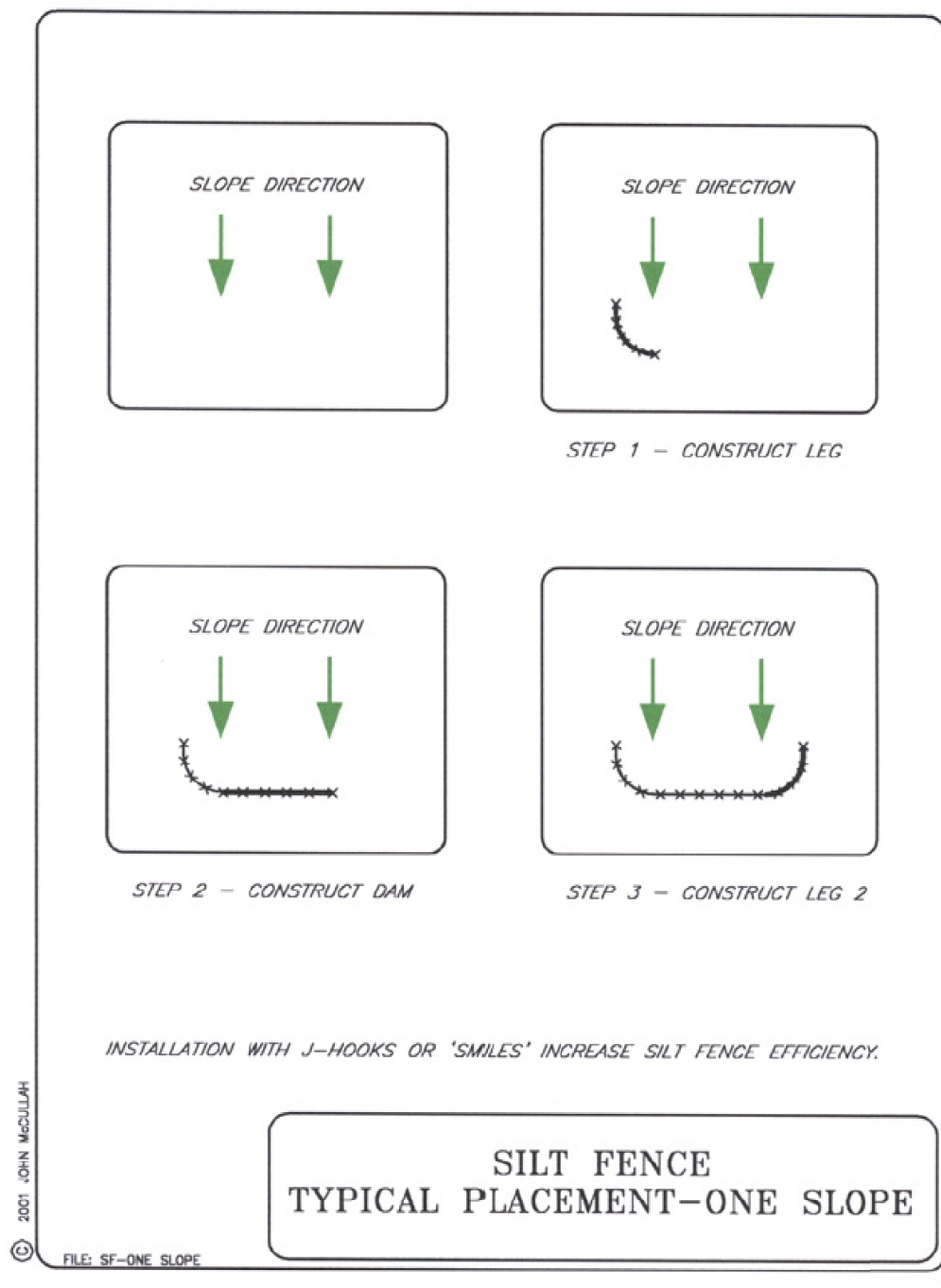
CITY OF AUSTIN  
WATERSHED PROTECTION DEPARTMENT  
STANDARD NO. 641S-1  
APPROVED: 11/16/20  
THE ARCHITECT/ENGINEER ASSUMES RESPONSIBILITY FOR APPROPRIATE USE OF THIS STANDARD.



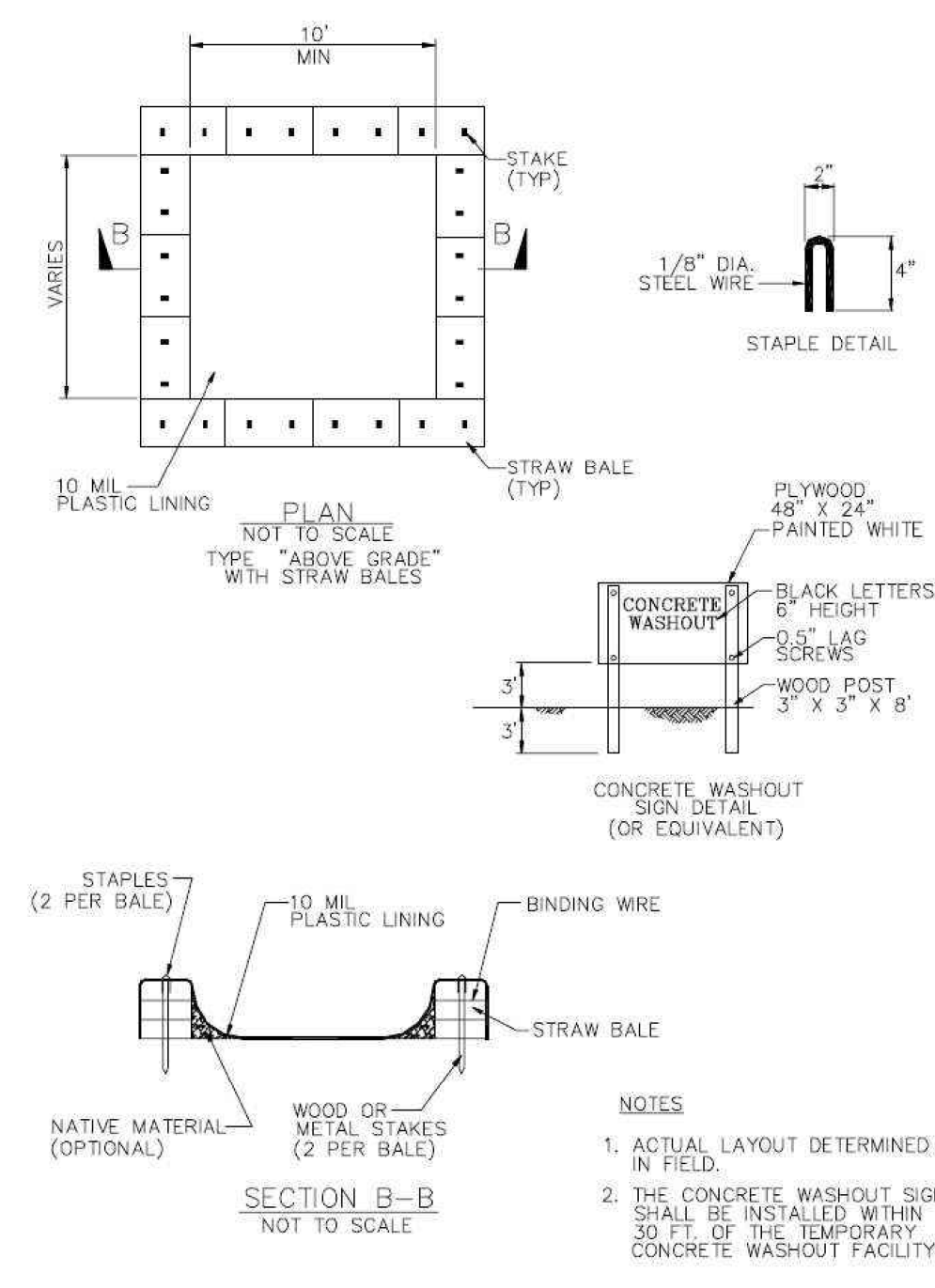
NOTE: SF - PERIMETER CONTROL



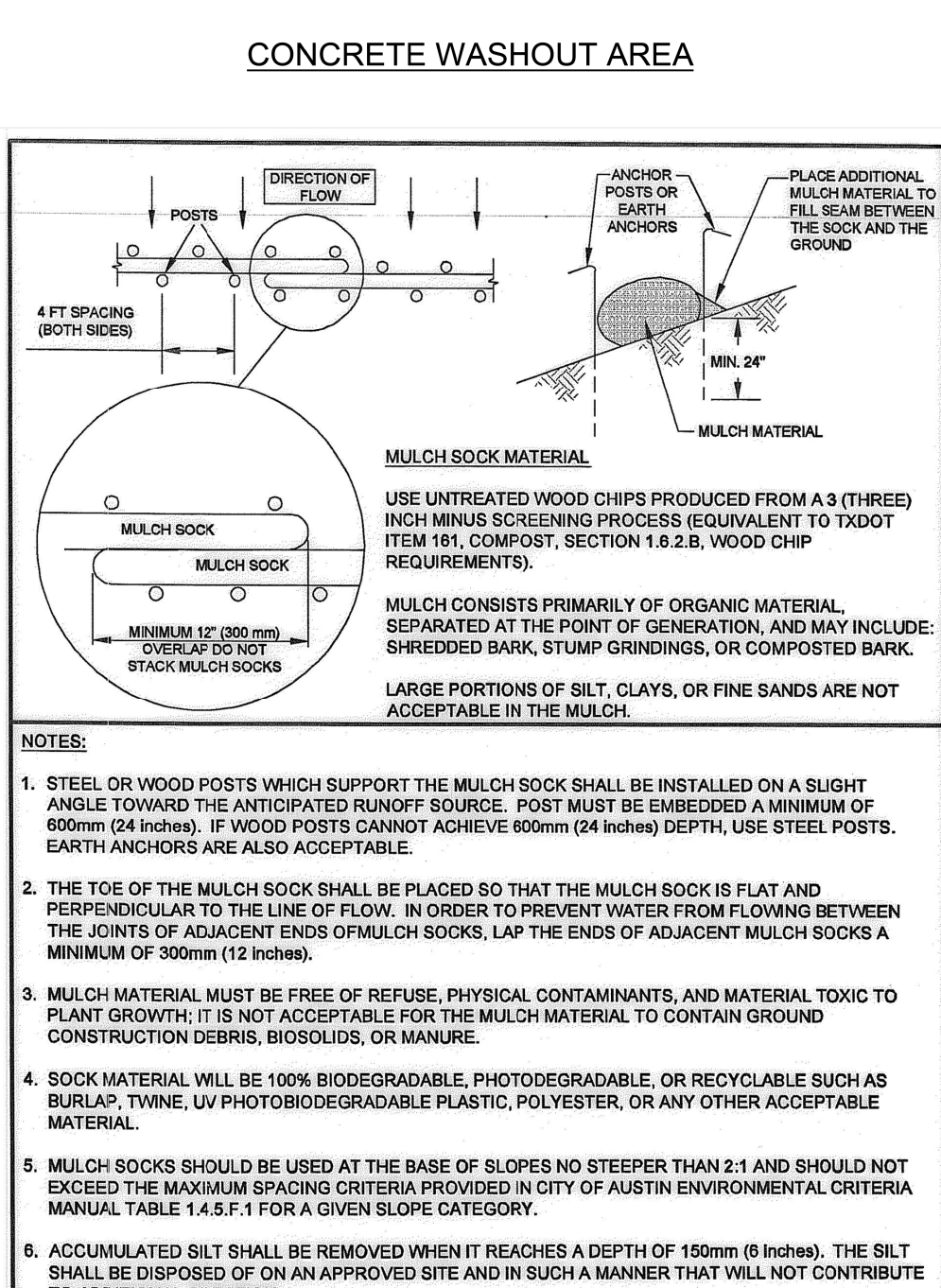
CITY OF AUSTIN  
WATERSHED PROTECTION DEPARTMENT  
STANDARD NO. 641S-1  
APPROVED: 11/16/20  
THE ARCHITECT/ENGINEER ASSUMES RESPONSIBILITY FOR APPROPRIATE USE OF THIS STANDARD.



NOTE: SF - ONE SLOPE



CITY OF AUSTIN  
WATERSHED PROTECTION DEPARTMENT  
STANDARD NO. 648S-1  
APPROVED: 08/24/2010  
THE ARCHITECT/ENGINEER ASSUMES RESPONSIBILITY FOR APPROPRIATE USE OF THIS STANDARD.



CITY OF AUSTIN  
WATERSHED PROTECTION DEPARTMENT  
STANDARD NO. 648S-1  
APPROVED: 08/24/2010  
THE ARCHITECT/ENGINEER ASSUMES RESPONSIBILITY FOR APPROPRIATE USE OF THIS STANDARD.

LOCATION OF EXISTING UNDERGROUND AND OVERHEAD UTILITIES ARE APPROXIMATE LOCATIONS ONLY. THE CONTRACTOR SHALL DETERMINE THE EXACT LOCATION OF ALL EXISTING UTILITIES PRIOR TO BEGINNING WORK AND SHALL BE FULLY RESPONSIBLE FOR ANY AND ALL DAMAGES WHICH MIGHT OCCUR.

811  
Know what's below.  
Call before you dig.

SITE PLAN RELEASE

FILE NUMBER: SP-2020-0169C EXPIRATION DATE: 04/17/2020  
CASE MANAGER: RANDY ROUDA APPLICATION DATE: 04/17/2020  
APPROVED ADMINISTRATIVELY ON: \_\_\_\_\_  
APPROVED BY PLANNING COMMISSION ON: \_\_\_\_\_  
APPROVED BY CITY COUNCIL ON: \_\_\_\_\_  
under Section 112 of Chapter 25-5 of the Austin City Code.

Director for Development Services Department CS-MU-V-00, CS-V,  
DATE OF RELEASE: \_\_\_\_\_ Zoning: CS-CO & CS-VO-CO  
Rev. No. 1 Correction No.1  
Rev. No. 2 Correction No.2  
Rev. No. 3

RELEASE OF THIS APPLICATION DOES NOT CONSTITUTE A VERIFICATION OF ALL DATA, INFORMATION AND CALCULATIONS SUPPLIED BY THE APPLICANT. THE ENGINEER OF RECORD IS SOLELY RESPONSIBLE FOR THE COMPLETENESS, ACCURACY AND ADEQUACY OF HIS/HER SUBMITTAL. WHETHER OF NOT THE APPLICATION IS REVIEWED FOR CODE COMPLIANCE BY CITY ENGINEERS.

SEAMLESS TRACT  
1401 S LAMAR BLVD  
EROSION/SEDIMENTATION CONTROL  
& TREE PROTECTION DETAILS

REVISIONS  
DATE BY DESCRIPTION NO.

DATE: DESIGNED BY: DRAWN BY: CHECKED BY: DRAWING NAME:

2/9/2021  
VINCENT A. GERALDI  
140026  
PROFESSIONAL ENGINEER

LJA Engineering, Inc.  
7500 Rialto Boulevard  
Building 11, Suite 100  
Austin, Texas 78735  
Phone 512.439.4700  
FRN-F-1386

JOB NUMBER: A523-1013  
EC2  
SHEET NO. 14 OF 58 SHEETS